



HAVANA: Instructions for use

Thank you for travelling in our Havana van!

You will find below information on the use of the various equipment in your van.

Please note that all our vans are **non-smoking**.



We hope you enjoy the cleanliness of your van, and we thank you for cleaning it at the end of your stay (unless you have taken the cleaning option):

- **Exterior cleaning:** with a Karcher (avoid roller washing). **DO NOT USE an abrasive sponge.**
- **Interior cleaning:** Dishes, kitchen and storage, with the provided equipment. **DO NOT USE an abrasive sponge.**

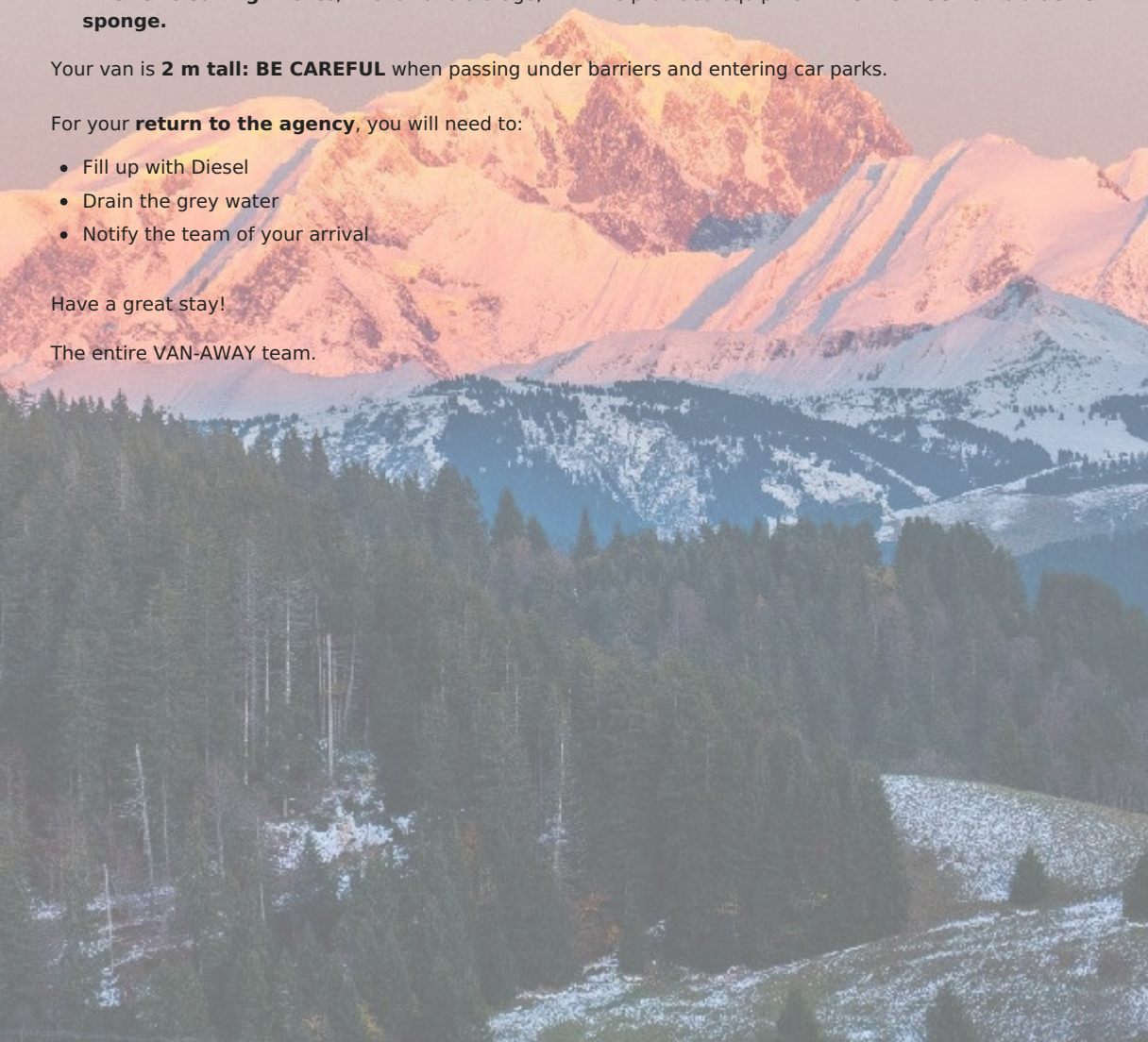
Your van is **2 m tall**: **BE CAREFUL** when passing under barriers and entering car parks.

For your **return to the agency**, you will need to:

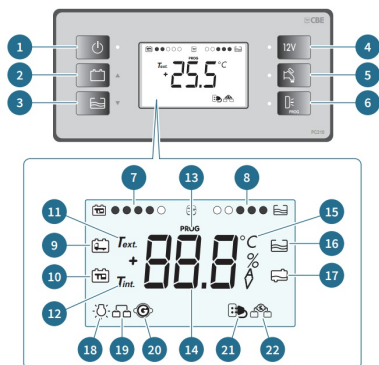
- Fill up with Diesel
- Drain the grey water
- Notify the team of your arrival

Have a great stay!

The entire VAN-AWAY team.

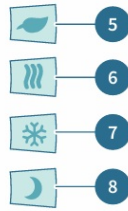
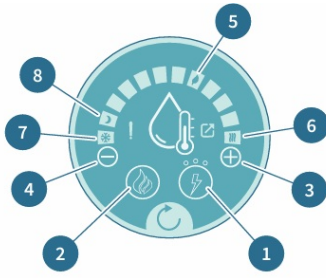


CONTROL PANEL



- 1 On / Off button
- 2 Battery voltage control
- 3 Clean water tank fill control
- 4 Activation of lights and USB sockets
- 5 Water pump command
- 6 Not used
- 7 Cell battery charge level
- 8 Clean water tank level
- 9 Engine battery
- 10 Cell battery
- 11 Outside temperature
- 12 Inside temperature
- 13 Not used
- 14 Current measurement display
- 15 Unit of measurement
- 16 Empty clean water tank
- 17 Full waste water tank
- 18 Low cell battery voltage alert
- 19 Cell battery charging - engine on
- 20 Engine running
- 21 Connected to 220V mains
- 22 Engine battery charging system activation

WATER HEATER



⚠ If the exclamation mark lights up, there is a power supply problem. The gas bottle is closed or empty - you must restore the supply. Once done, press and hold the reset button (arrow) for 3 seconds to cancel the error.

- 1 Electric water heater operation
- 2 Gas water heater operation
- 3 Increase heating temperature
- 4 Decrease heating temperature
- 5 Intermediate heating level
- 6 Maximum heating level
- 7 Frost protection
- 8 Standby

TURN ON THE WATER HEATER

Press the heating button (2). The button lights up blue. When the heating starts, the button turns red.

SET THE TEMPERATURE

Set the water heater temperature setpoint to maximum by pressing button (3). The "Max. Temperature" indicator (6) must be on.

MONITORING WATER TEMPERATURE

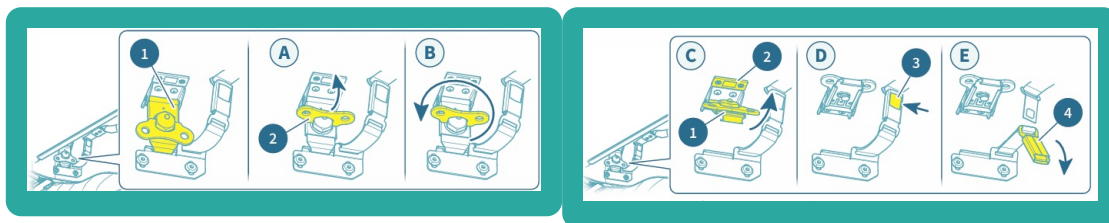
While the water is heating up, the semi-circle diodes light up until reaching the max. temperature (6): you can use hot water at the sink and rear shower!

TURN OFF THE WATER HEATER AFTER USE

Press button (2) to turn off

⚠ The electric heater will only work when the vehicle is connected to the mains. We therefore recommend always using gas heating.

OPENING THE POP-UP ROOF



After unclipping the roof trim, lift the wing nut (1) and turn it counter-clockwise.

Lift the wing nut and press it against the latch (2). Press the strap button (3) to release it. After opening a door, push the roof up using the strap.

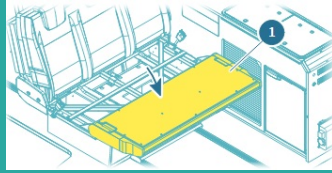
⚠ DO NOT FORGET TO OPEN A DOOR OR WINDOW BEFORE OPENING AND CLOSING THE ROOF. TAKE GREAT CARE TO PROTECT THE CANVAS DURING HANDLING. NEVER DRIVE WITH THE ROOF OPEN. MAKE SURE EVERYTHING IS PROPERLY CLOSED AND SAFE BEFORE DEPARTING.

To close the roof, reverse the entire opening procedure! **Lower the bed.** Pull evenly on the roof handles to close it. **Pull the canvas inside the vehicle** so it is not damaged by mechanical parts such as pantographs, etc. **Roll the canvas at the latch level** so the canvas does not touch the latches. Unhook the latches from the magnets. **Lock the latches** in the closing brackets by turning the wing nuts clockwise. Check that the roof is properly compressed. Lock the safety straps. Re-clip the roof trim onto the end of the bed.

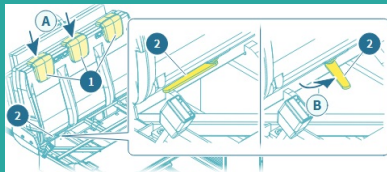
UNFOLDING THE SOFA



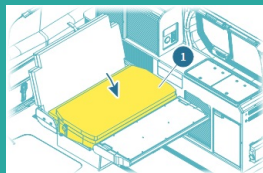
Lift the operating bar (2) from the middle to unlock the sliding sofa seat (1). Then slide it towards you.



Tilt the sliding sofa seat (1).



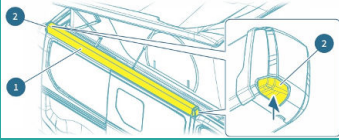
Lower the headrests (1) then pull the lever (2) to release the backrest. Release the lever before tilting the backrest.



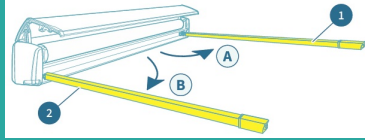
Tilt the backrest of the sliding sofa (1). Tilt the mattress (2) onto the sliding sofa seat.

To fold the sofa back, reverse the procedure.

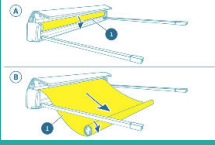
OPENING THE AWNING



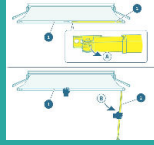
Push the locking buttons (2) to open the awning (1). Open the awning cover (1).



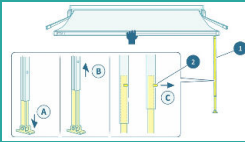
Unfold the right support bar (1) of the awning. Unfold the left support bar (2) of the awning.



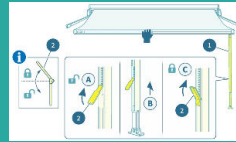
Fully unroll the awning canvas.



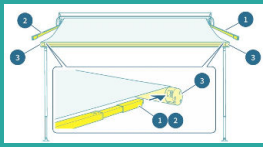
Hold the canvas (1). Pull the right leg (2) to free it from the awning canvas (1). Tilt the right leg (2) towards the ground.



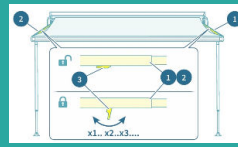
Hold the right leg (1) on the ground. Lift and extend the upper part of the right leg (1). The pin (2) must fit correctly into its housing.



Raise the locking lever (2) to 45°. Adjust the leg (1) to the desired height. Lower the locking lever (2) to lock the leg position.

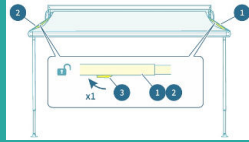


Insert the end of the right support bar (1) into the canvas reel attachment system (3). Insert the end of the left support bar (2) into the canvas reel attachment system (3).

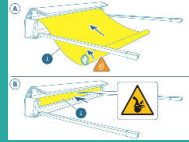


Use the tension lever (3) to tension the awning canvas. Make several back-and-forth movements with the tension lever (3) to achieve correct canvas tension.

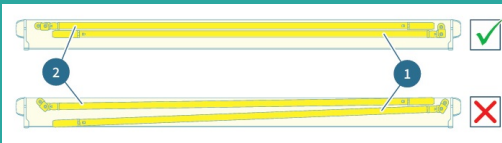
CLOSING THE AWNING



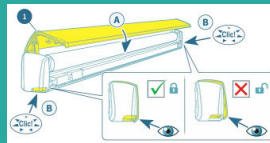
Place the tension lever (3) in the unlocked position to bring in the left (2) and right (1) support bars. Fold and store the legs.



Roll up the canvas (1) counter-clockwise.



Place the right (1) and left (2) support bars correctly in the awning housing.



Check that the awning is properly closed (you should hear a "click").